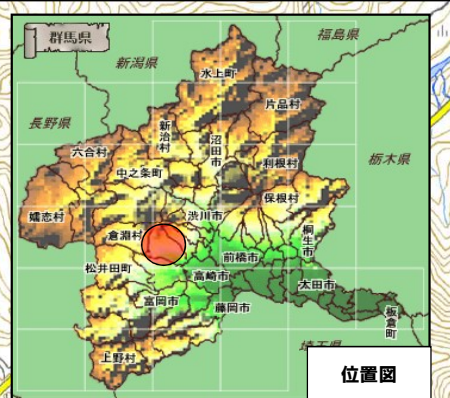
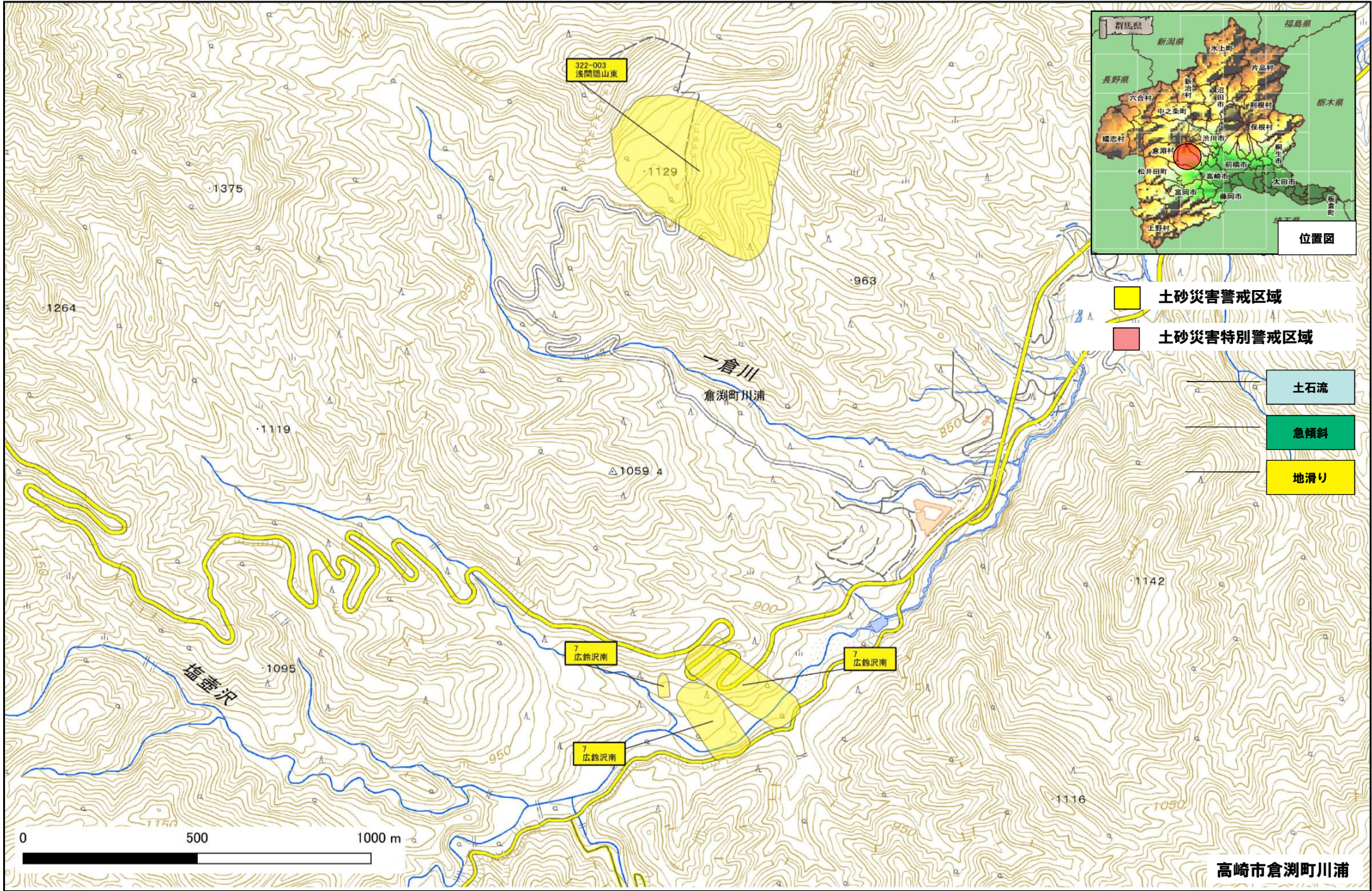


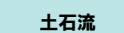


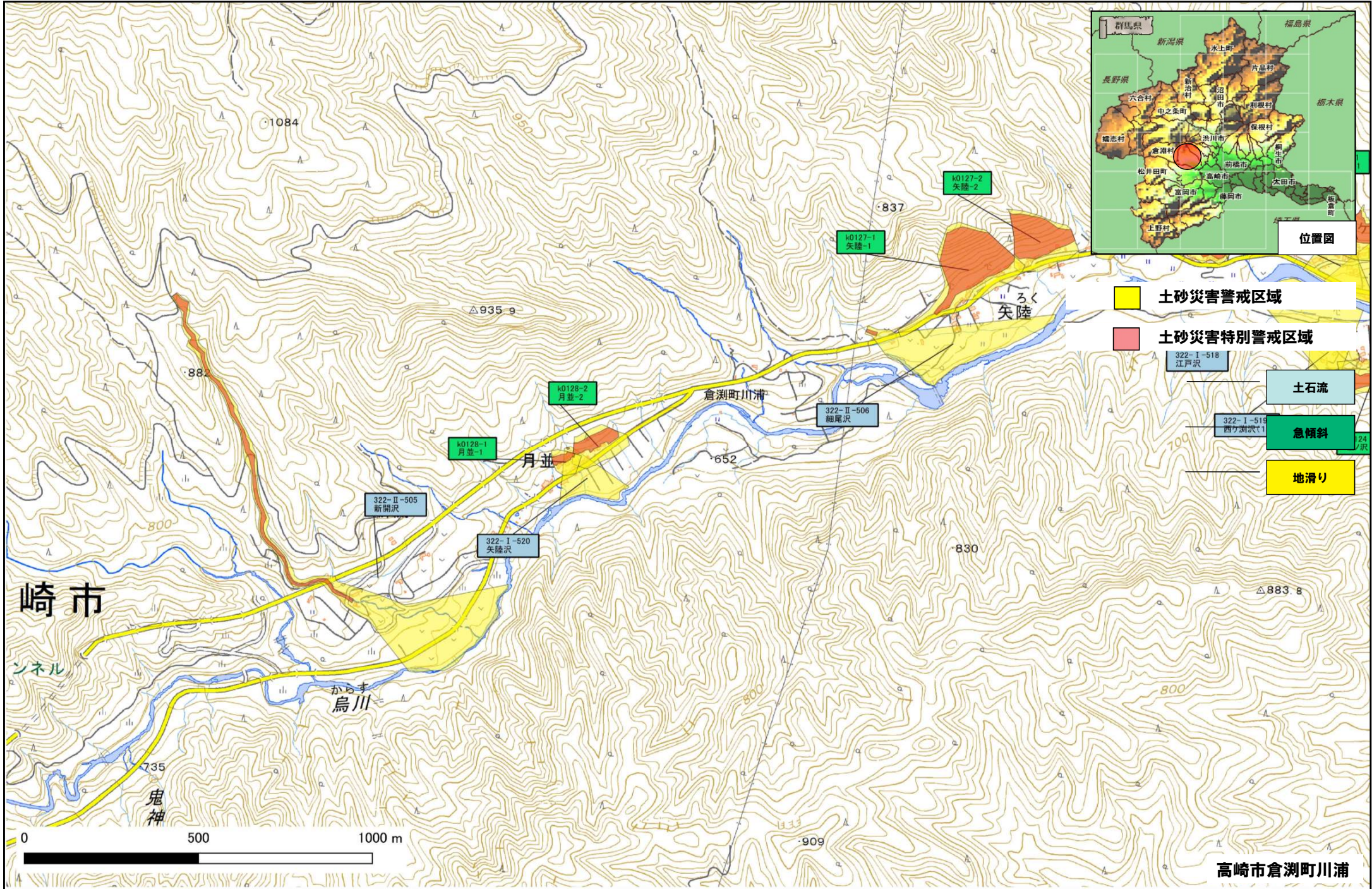


高崎市倉渕町 (1/12)

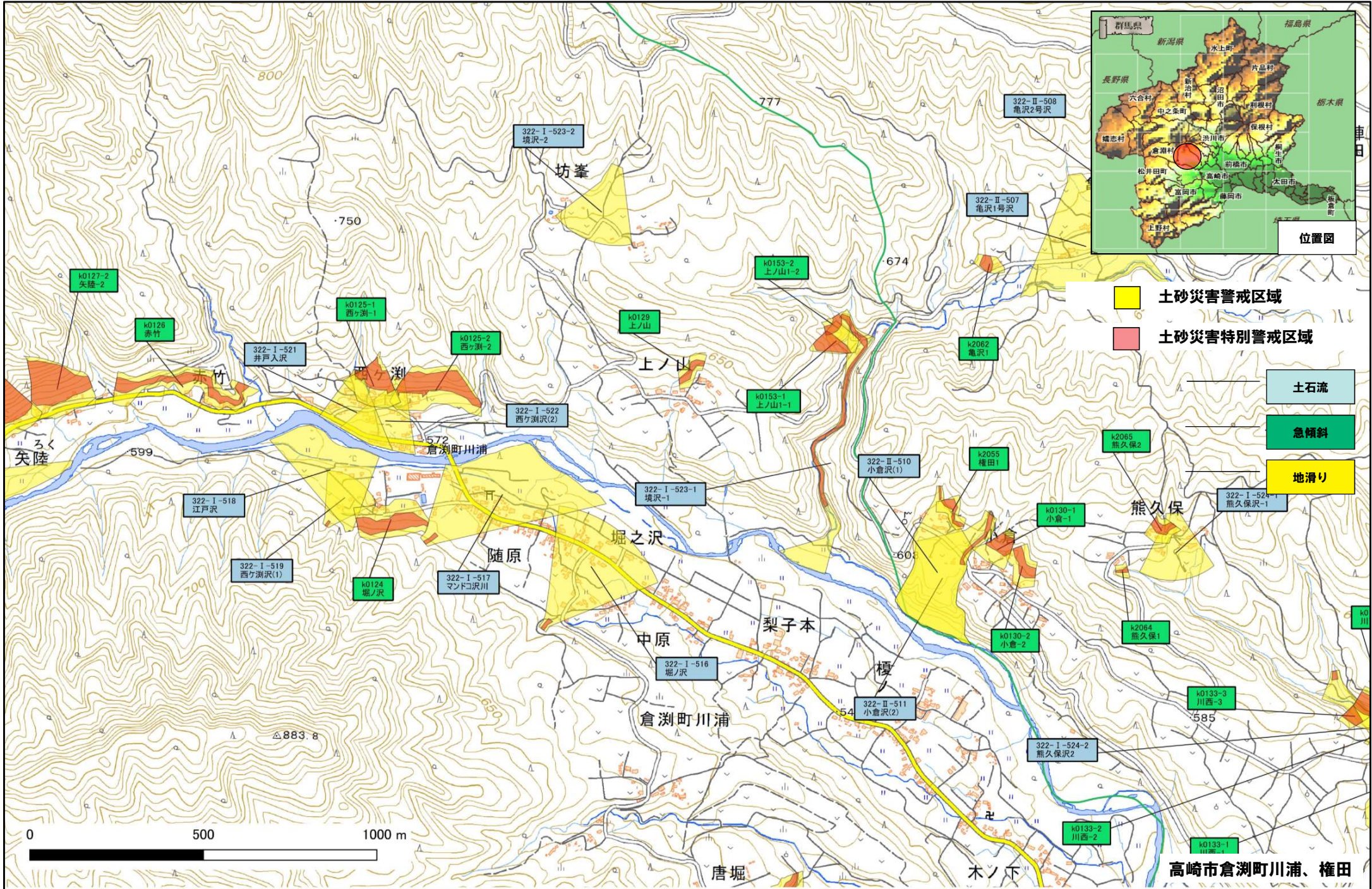


-  土砂災害警戒区域
-  土砂災害特別警戒区域
-  土石流
-  急傾斜
-  地滑り

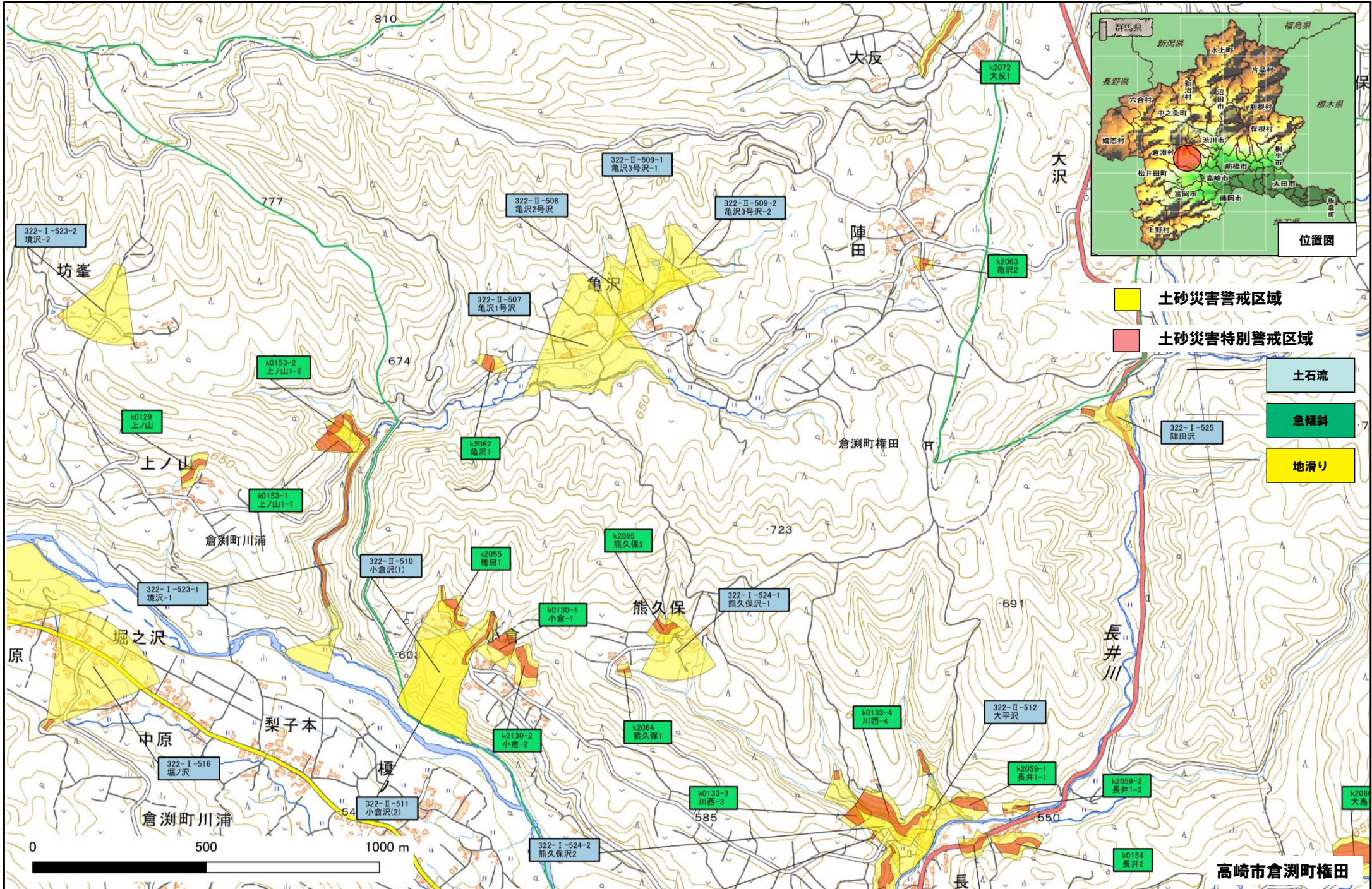
高崎市倉渕町 (2/12)



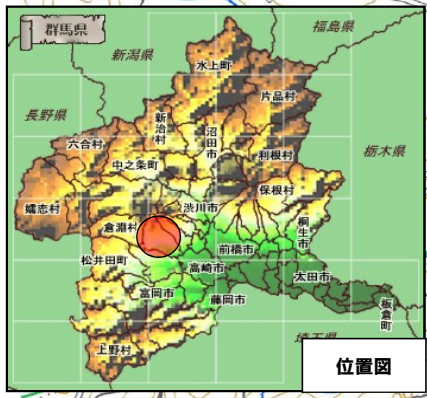
高崎市倉渕町 (3/12)



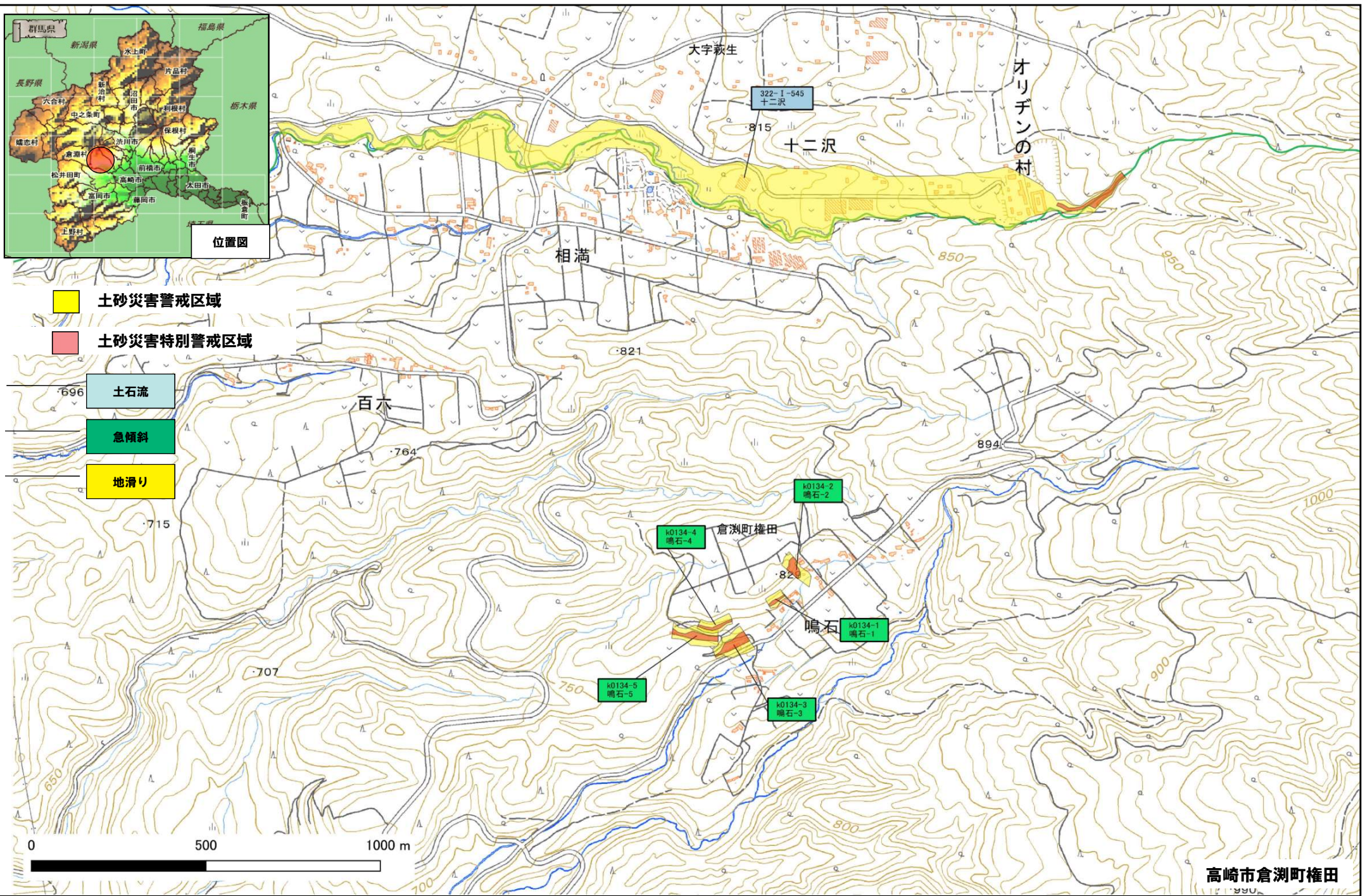
高崎市倉渕町 (4/12)



高崎市倉渕町 (5/12)

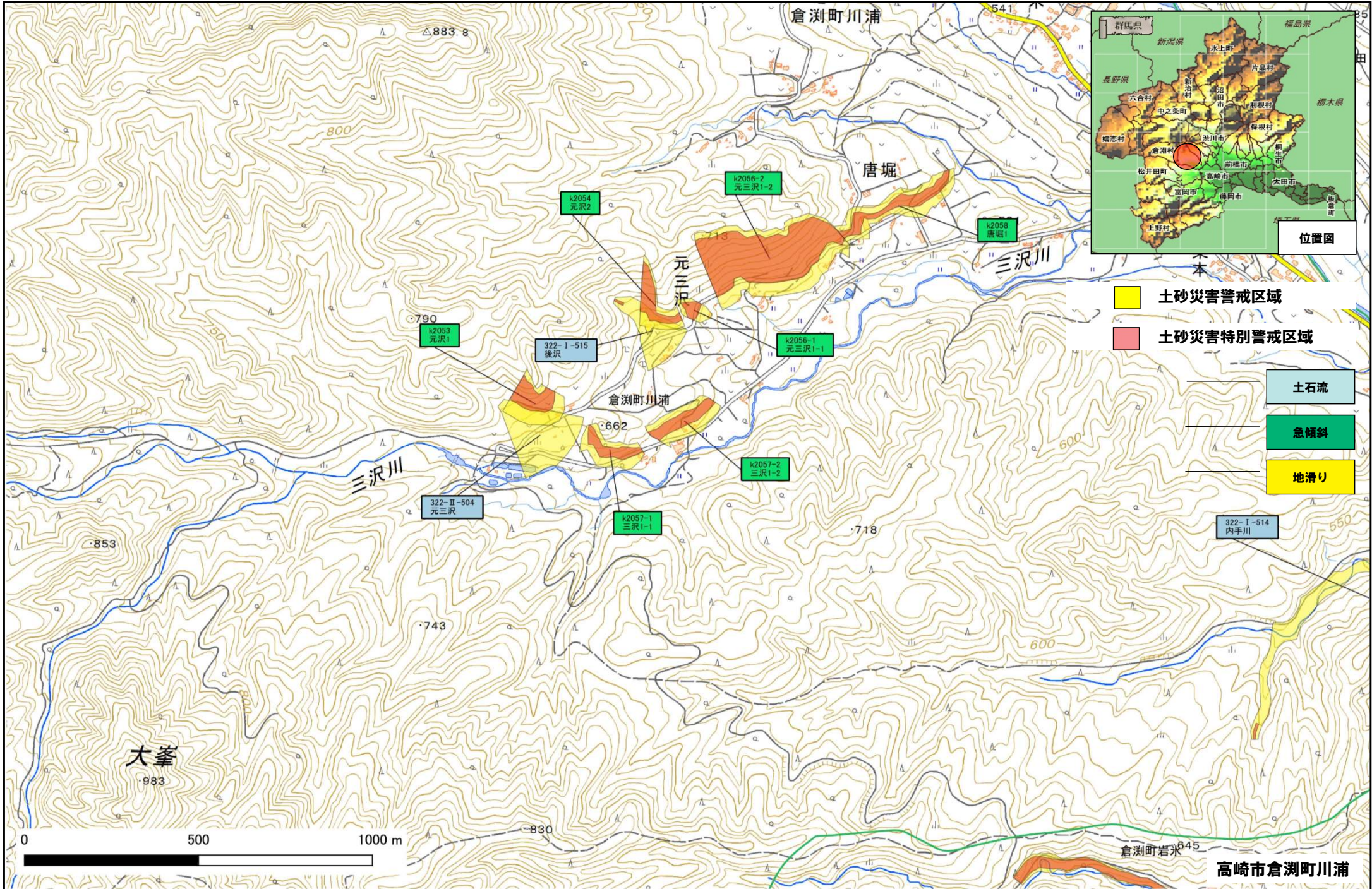


- 土砂災害警戒区域
- 土砂災害特別警戒区域
- 土石流
- 急傾斜
- 地滑り

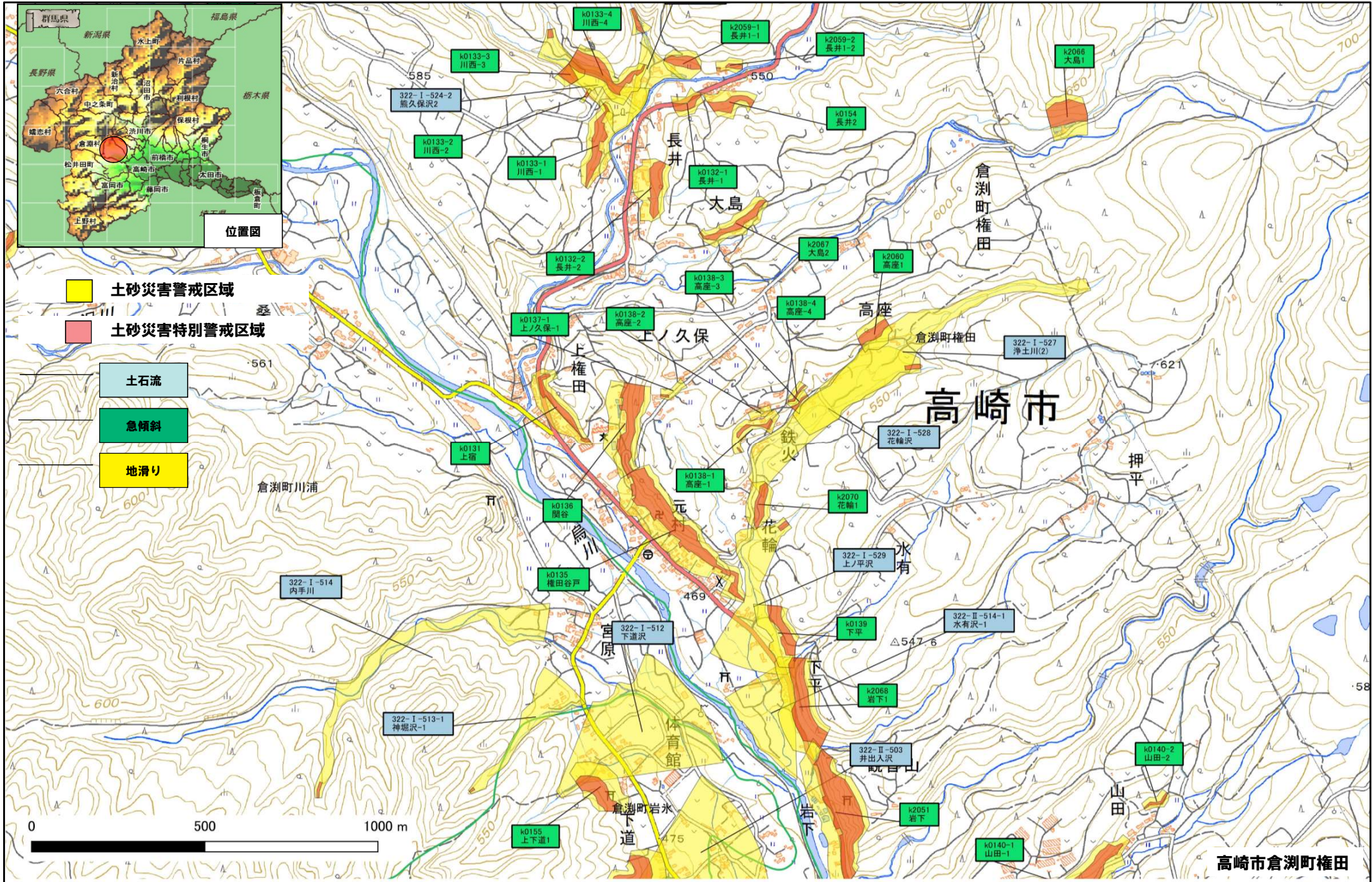


高崎市倉渕町権田

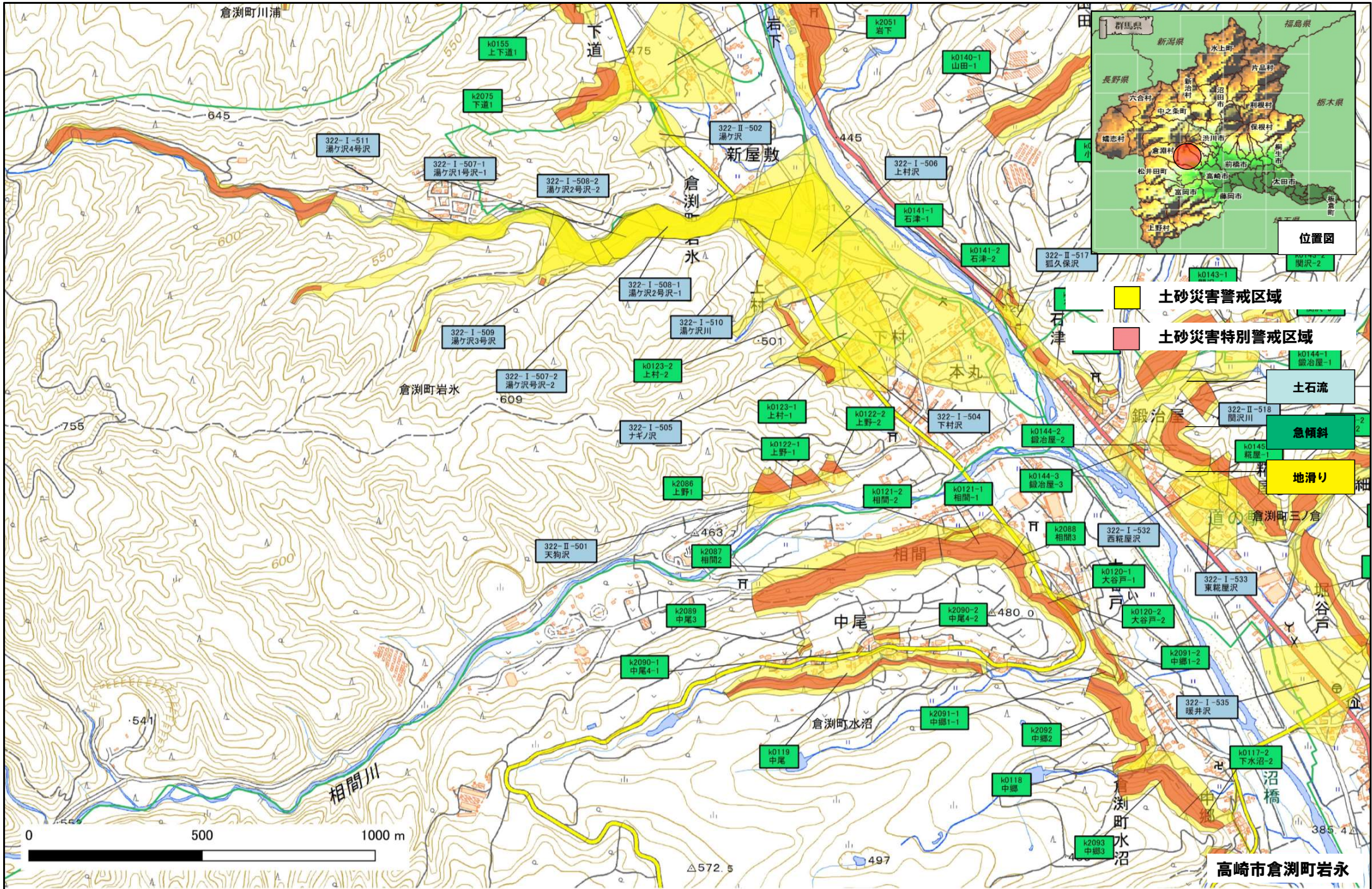
高崎市倉渕町 (6/12)



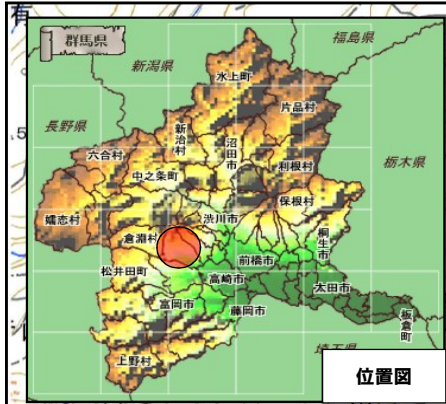
高崎市倉渕町 (7/12)



高崎市倉渕町 (8/12)

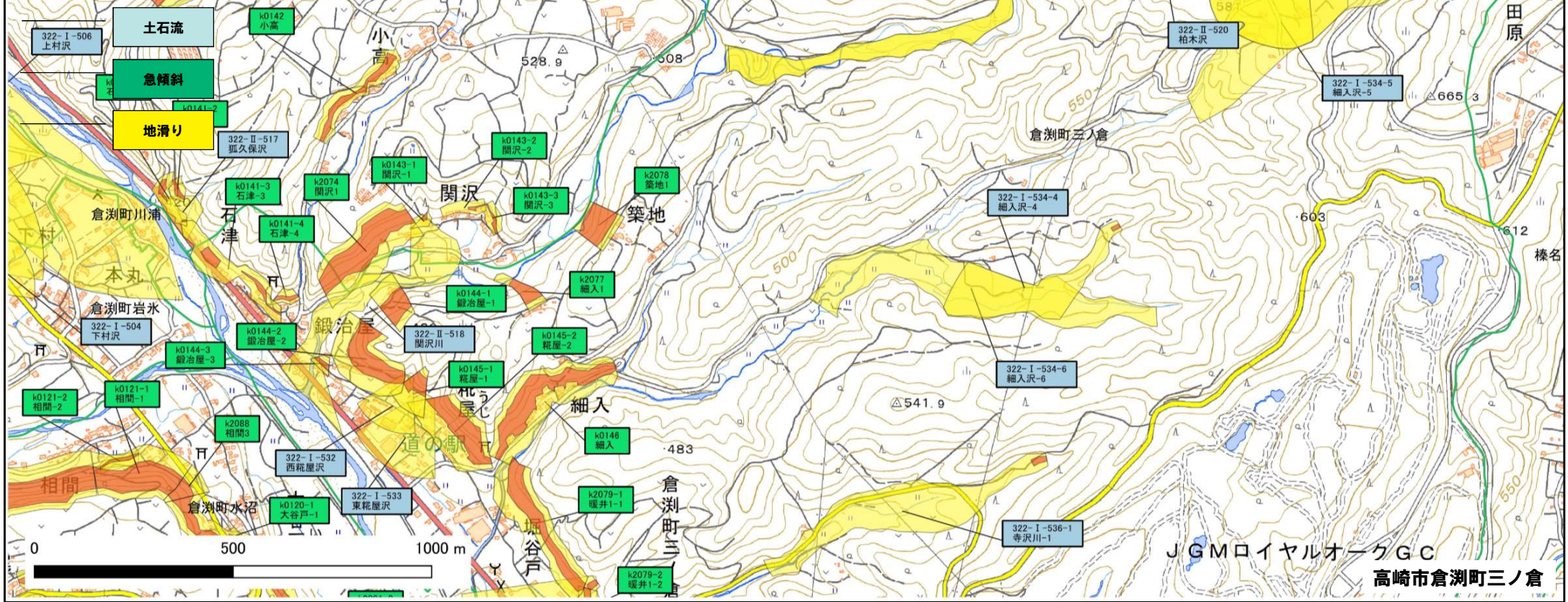


高崎市倉渕町 (9/12)

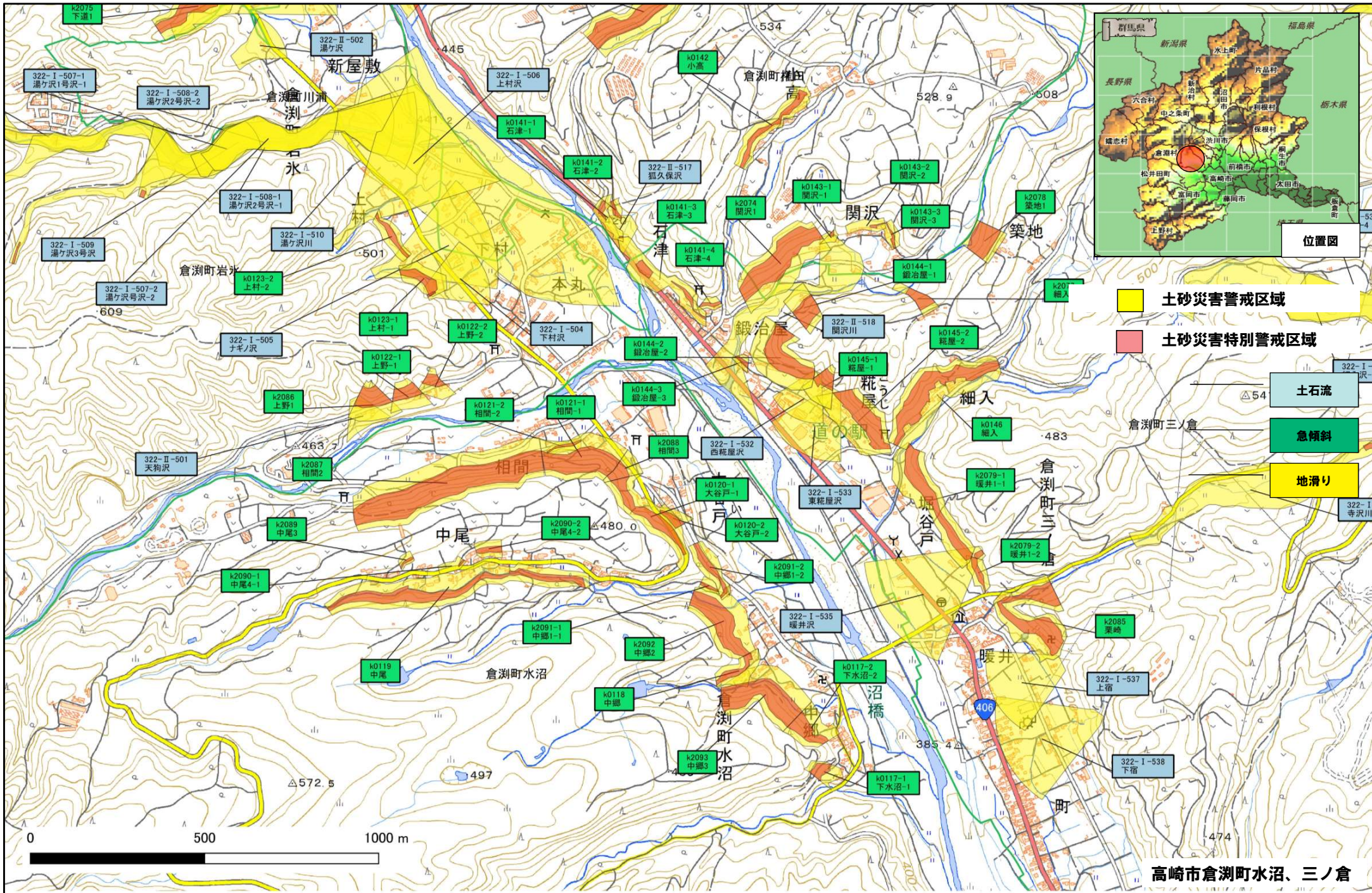


位置図

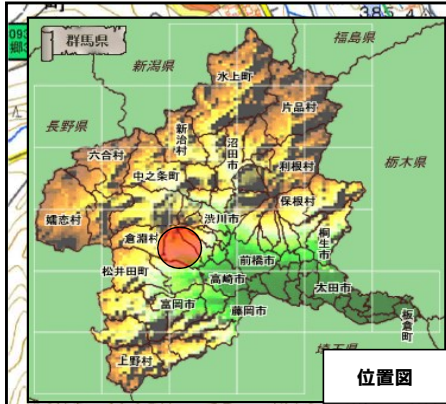
- 土砂災害警戒区域
- 土砂災害特別警戒区域



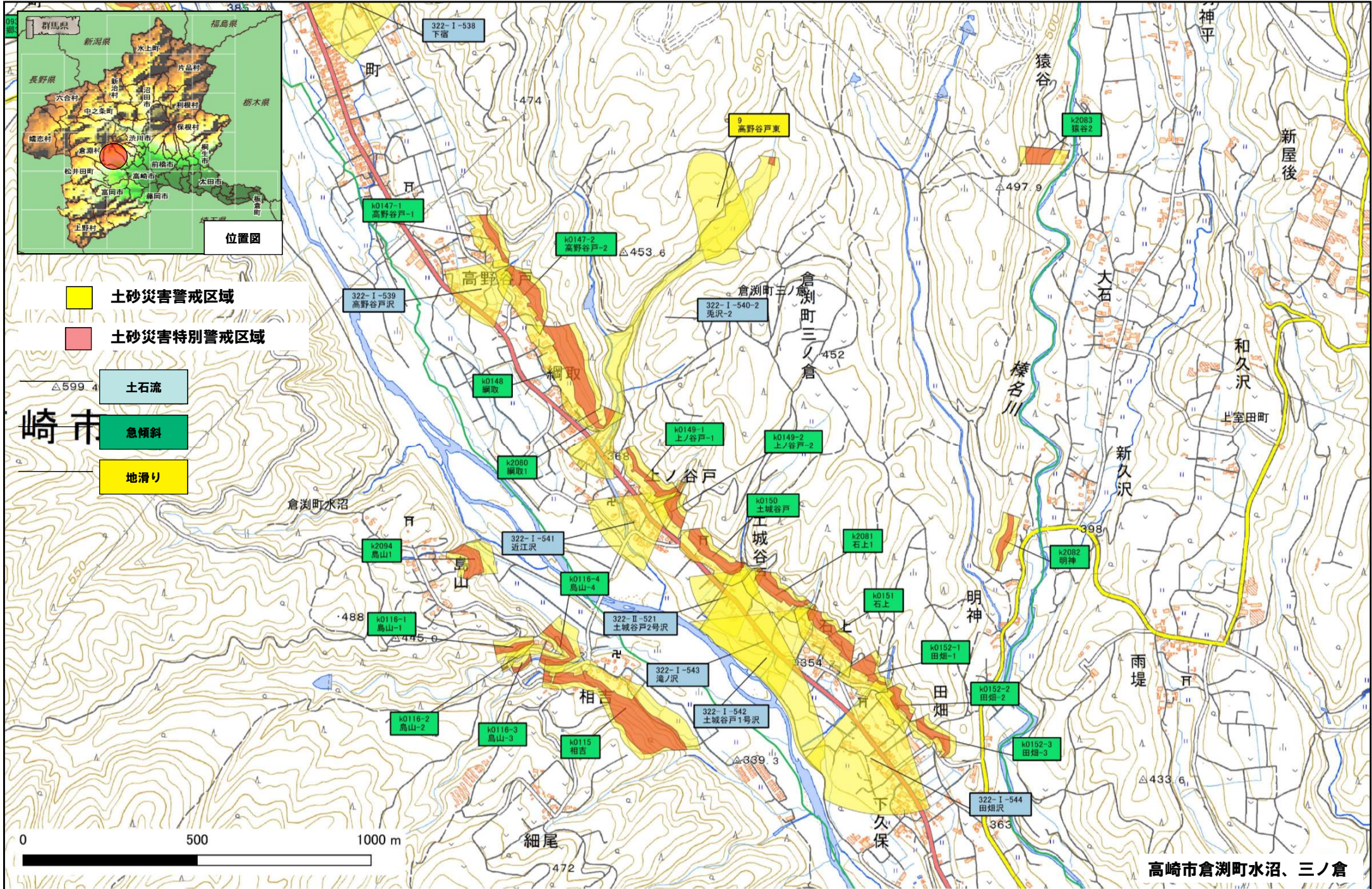
高崎市倉渕町 (10/12)



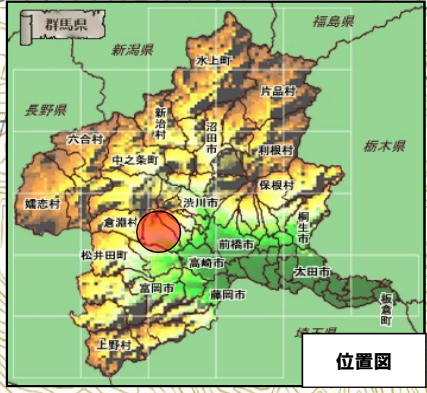
高崎市倉渕町 (11/12)



- 土砂災害警戒区域
- 土砂災害特別警戒区域
- 土石流
- 急傾斜
- 地滑り

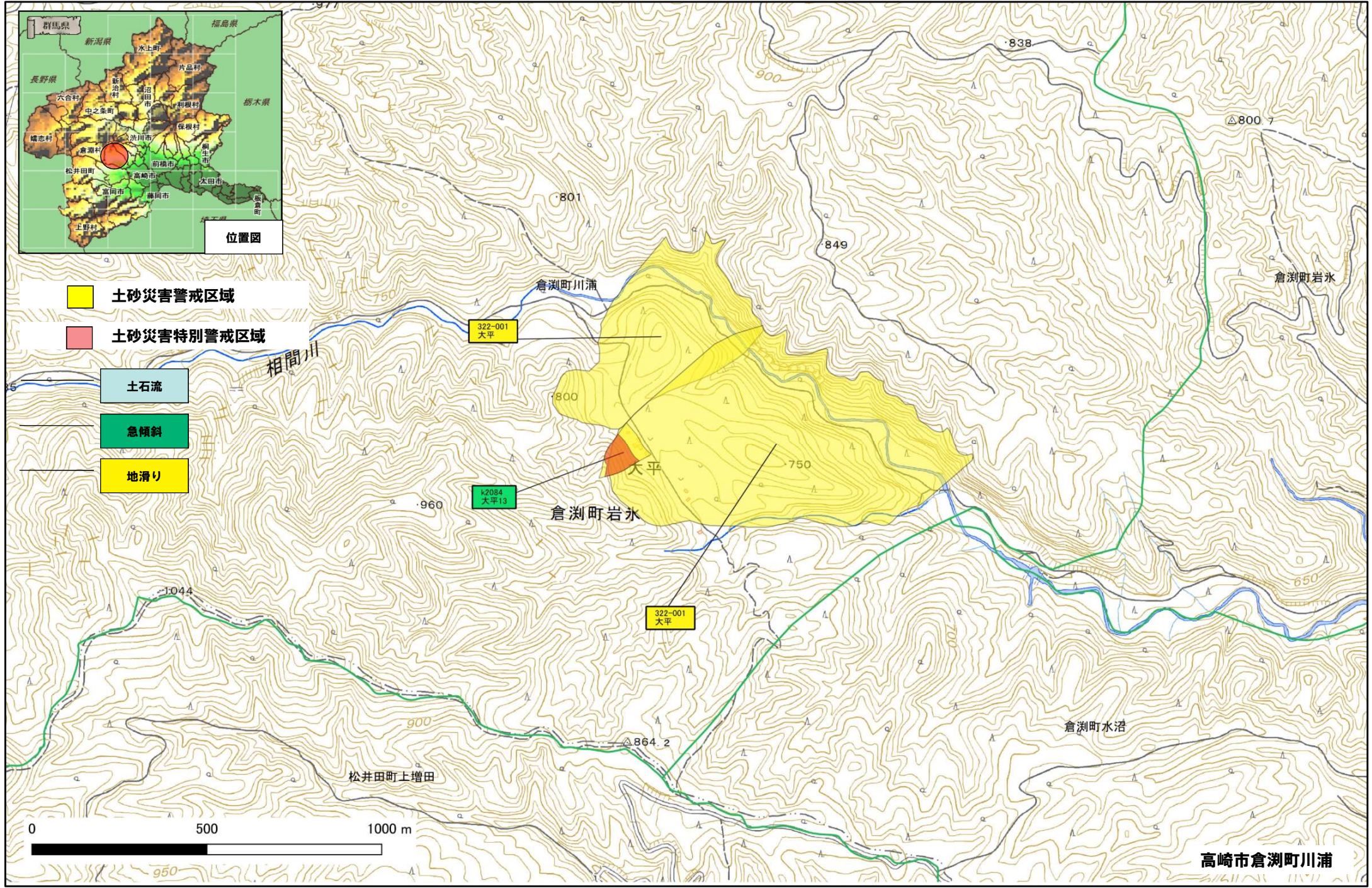


高崎市倉渕町 (12/12)



位置図

- 土砂災害警戒区域
- 土砂災害特別警戒区域
- 土石流
- 急傾斜
- 地滑り



高崎市倉渕町川浦